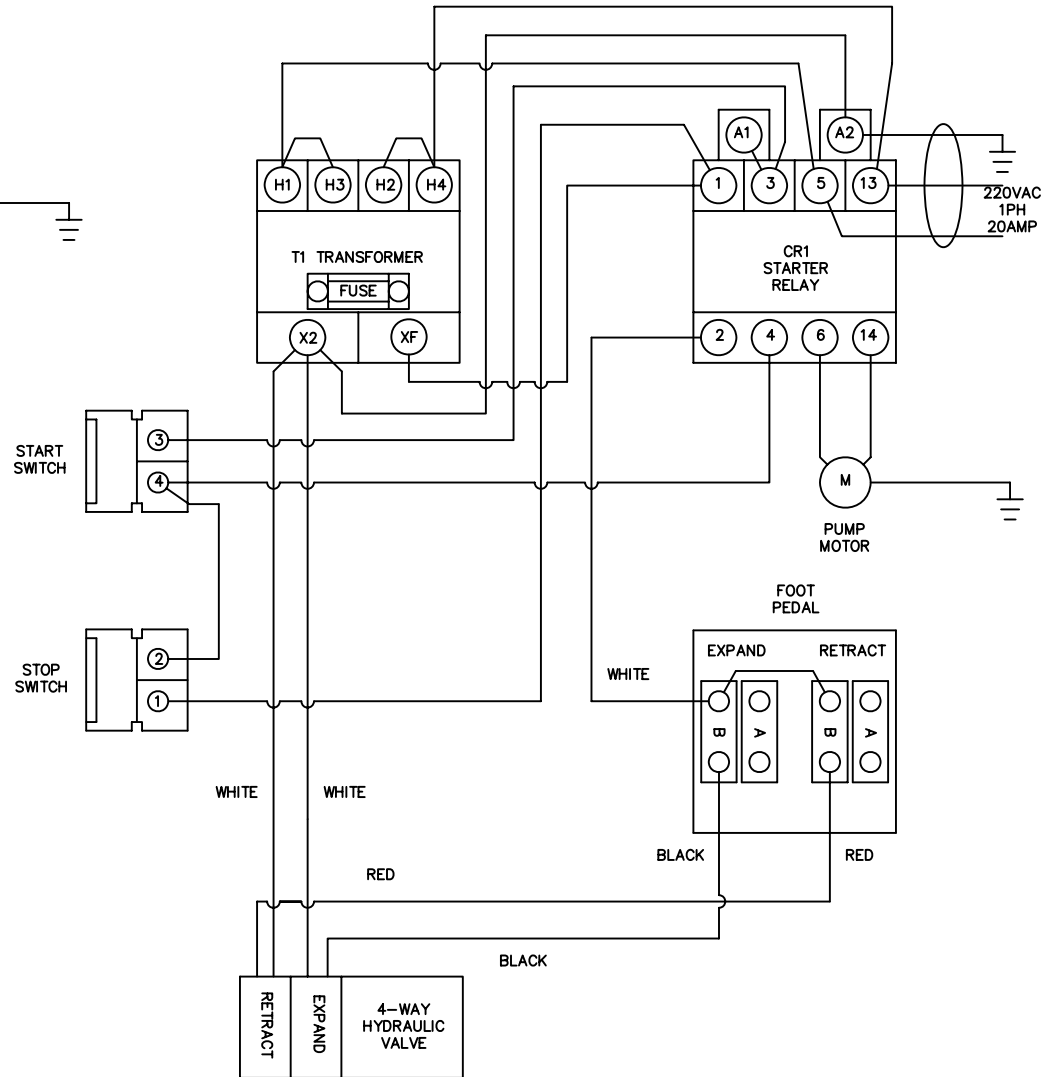
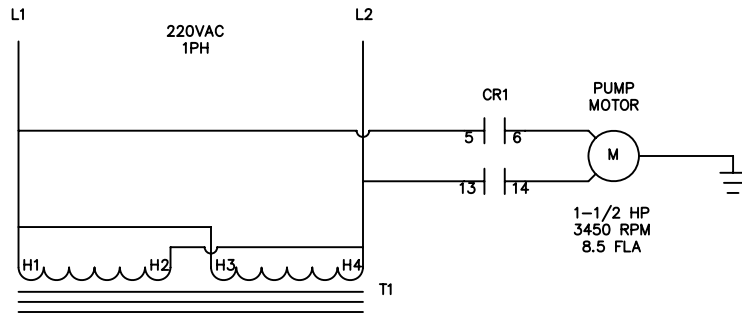
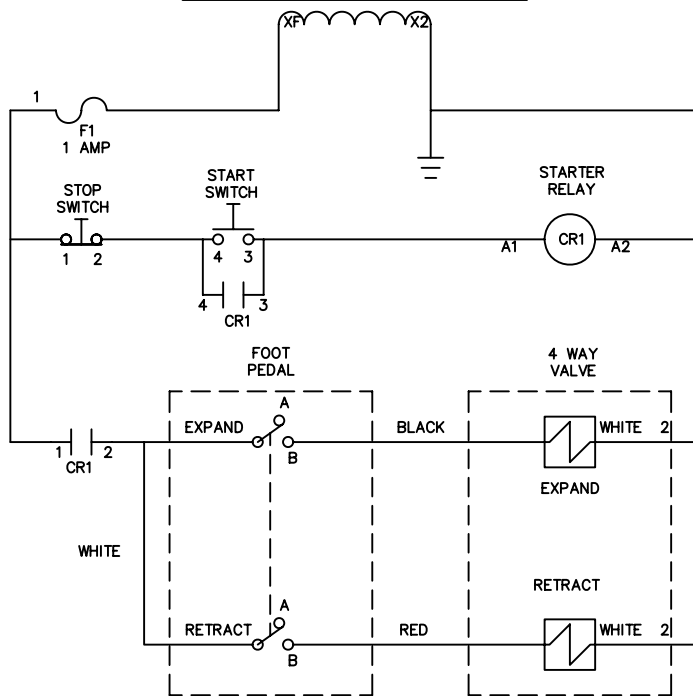


NOTES: 1-MUST BE FREE OF BURRS, SHARP CORNERS - EDGES



17



TITLE SCHEMATIC/WIRING DIAGRAM
BRUTE II EXPANDER 220VAC, 1 PH

1	UPDATED TO LATEST MFG METHOD	NHK	06/23/11
REV	DESCRIPTION	BY.	DATE
STYLE	MAT'L	FINISH	
BRUTE II			

UNLESS OTHERWISE SPECIFIED
TOLERANCES TO BE:
DECIMAL FRACTIONS
X.XXX ± ±
X.XX ± ±

Red Head RED HEAD BRASS LLC.
SHREVE, OH.

SCALE FULL & AS NOTED
DRAWN DATE J. CARROLL 04/15/03
APP'D DATE

DRAWING UNITS = INCHES
ANGLES = ±
125 ON ALL MACHINE SURFACES
DO NOT SCALE DRAWING

DWG. NO. 10238-4
PART NUMBER
REV. 1

THIS DRAWING IS THE PROPERTY OF RED HEAD BRASS LLC. AND THE CONTENTS HEREIN ARE PROPRIETARY AND CONFIDENTIAL. THE CONTENTS OF THIS DRAWING MAY NOT BE DISCLOSED OR USED BY ANYONE WITHOUT PRIOR WRITTEN CONSENT OF THE MANAGEMENT OF RED HEAD BRASS LLC. IT MAY NOT BE USED FOR MANUFACTURING UNLESS FULLY SIGNED.